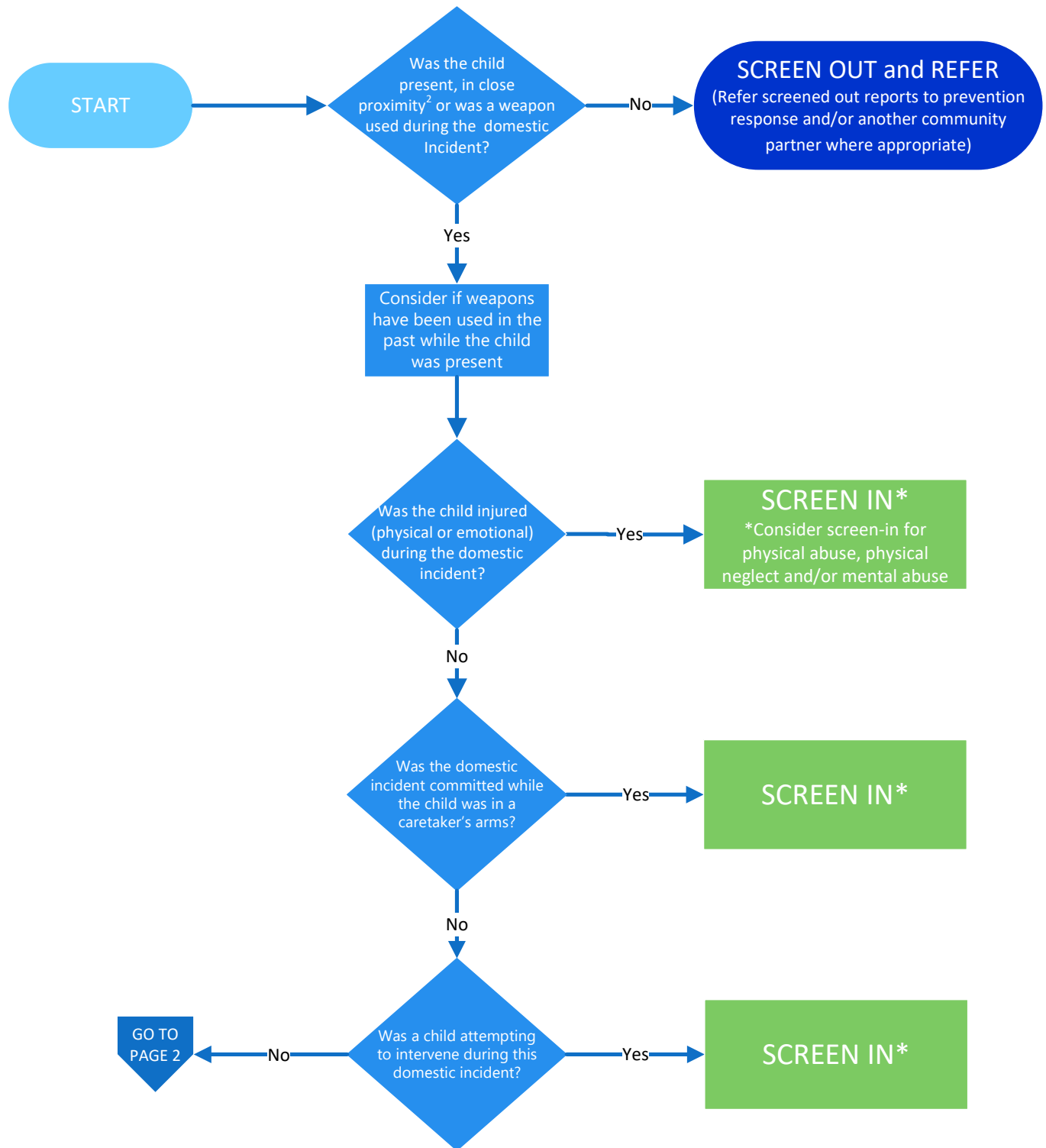


# Domestic Violence Decision Tree Tool<sup>1</sup>



<sup>1</sup> The LDSS may want to consider the investigation track if one or more of the following are present:

- Use of a weapon
- Involvement of law enforcement or courts to protect children or caretaker
- Physical injury requiring medical treatment
- Co-occurring mental health or substance abuse

<sup>2</sup> Close Proximity Definition: Children were aware, witnessed or heard the domestic incident.

# DV Decision Tree Tool (Page 2)

